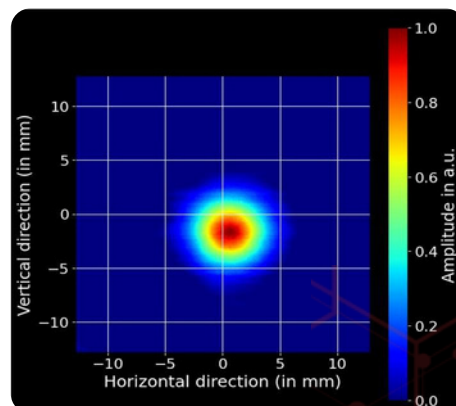
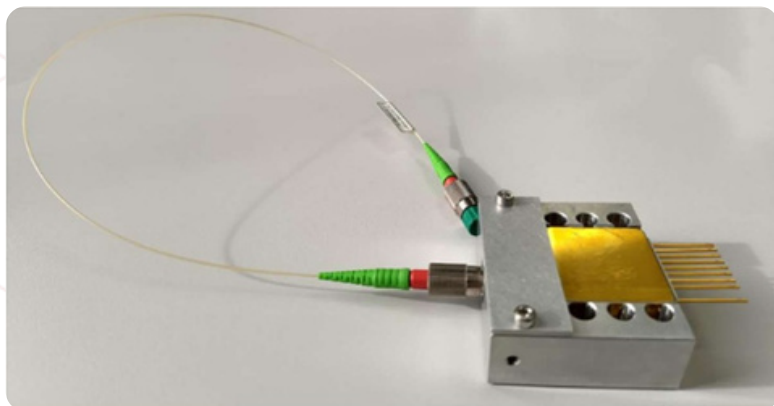


QCL fiber-coupled module datasheet



Left: Picture of the fiber-coupled HHL-packaged QCL. Right: Beam profile right after the fiber exit.

Key advantages :

- High power >1W
- Fiber output
- Factory pre-aligned
- Plug-and-play
- High wall-plug efficiency

Prototype specifications	Typical value
Wavelength of emission	~4.0 or ~4.6μm
Mean power at the exit of the fiber	>1W
Peak power at the exit of the fiber	>2W
Fiber coupling	~80% injection
Mode of operation	QCW pulsed operation only (not CW)
Type of laser	Fabry Perot QCL
Beam quality	Single mode, near diffraction limit
Laser safety class	Class IV
Fiber material	InF3
Fiber connector	FC/APC
Numerical aperture	0.3
Packaging	HHL-package with built-in TEC and thermistance
Typical dimensions of the HHL fiber module	L x W x H: 120 x 60 x 25 mm

Plug-and-play turnkey system option for easier after sales services :

The optical interface of the turnkey system is a female fiber connector.

