

DFB QCL FOR HIGH PERFORMANCE CHEMICAL ANALYSIS

uniMir

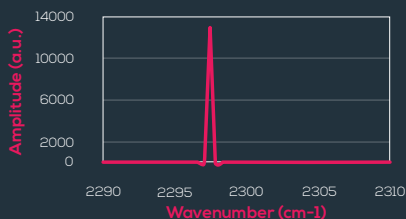
CHARACTERISTICS

- ▶ Quantum Cascade Lasers for single gas detection
- ▶ Distributed feedback laser (DFB) for high performance spectroscopy
- ▶ Quasi continuous wave (QCW) = lower consumption
- ▶ Continuous wave (CW) = high performance
- ▶ Large scale production capacity

▶ **Fibered version available with  SelenOptics inside**

▶ **New! Driver available**

SPECIFICATIONS

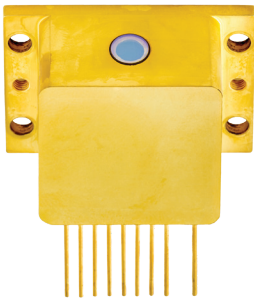


Type	DFB QCL
Peak emission wavelength	between 3 and 12 μm
Operating temperature typ.	room temperature
Tunable range typ.	> 2 cm^{-1}
Output power typ.	1-100 mW
Side-mode suppression ratio typ.	30dB
Cooling system required	QCW : air CW : water or air
Package	HHL or butterfly, lensed or fibered



contact@mirsense.com
www.mirsense.com

NanolInnov 8 avenue de la Vauve
91120 Palaiseau, France



DFB OCL
FOR HIGH
PERFORMANCE
CHEMICAL
ANALYSIS

uniMir

