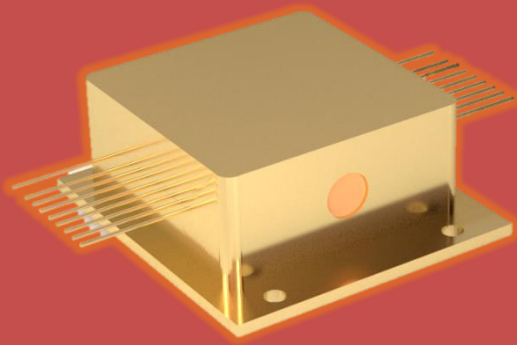


uniMir

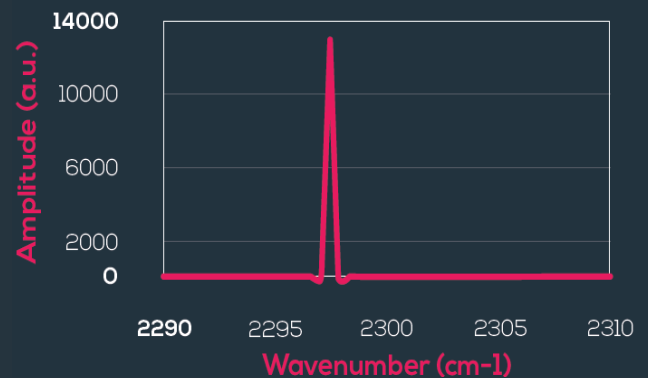
QCL FOR HIGH PERFORMANCE CHEMICAL ANALYSIS



Features

- ▶ Quantum Cascade Lasers for single gas detection
- ▶ Distributed Feedback laser (DFB) for high performances Spectroscopy or mutlimode lasers
- ▶ Pulsed mode (QCW) or Continuous mode (CW)
- ▶ High beam quality with Collimating lens
- ▶ Any wavelength available on demand with COST prices!

Specifications



Type:	Pulsed mode (QCW) Continuous mode (CW)
Wavelength available:	4 μ m-10 μ m
Tunable range (typ):	4 cm ⁻¹
Output Power (typ):	few mW to >50 mW
Package	HHL or Butterfly

• Line Width (typ.)	<0,001 cm ⁻¹ (CW) <1.5cm ⁻¹ (QCW)
• Operating Temperature range	< 40°C
• Tuning Coefficient (typ.)	Temperature: 0.4nm/°C Current: 45nm/A (0.02cm ⁻¹ /mA)
• TEC Max heat Capacity (typ.)	<55W
• Temperature sensor	Thermistor Type: 10 kΩ

Example: CW QCL for H₂CO (Formaldehyde) @ 20°C

• Central Wavelength	1762,4 cm ⁻¹
• Threshold Voltage	8.9 V
• Threshold Current	0.41 A
• Maximum Voltage	10.3 V
• Maximum Current	0.78 A
• Maximum Optical Power	70 mW

